

### DESCRIPTION

The FLF3 Series Flood Light incorporates a modern design onto the traditional look. These luminaires are watertight with a rugged aluminum housing. Delivering high-performance lighting at 135 lm/w. Great for all your flood lighting needs.

### SPECIFICATION FEATURES

#### Construction

- Housing, electrical compartment and fitter are all made from die case aluminum that is pre-treated and powder-coated to meet the most rugged industry standards.
- Door frame features an integral accessory channel for the mounting of optional light control accessories.
- Vented housing isolates LED module from driver, maximizing product life and performance
- Doorframe seals to housing with a continuous extruded silicone gasket.

#### Optics

- Optics(NEMA Type): 7H\*6V.
- Scalable Lumen Packages from 1,950 to 26,000 Lumens.
- Provides the best combination of vertical and horizontal illumination while reducing light behind the poles.
- High performance acrylic optic securely attached to internal heat sink for maximum thermal dissipation.

#### Electrical

- Universal 120-277 VAC or 347-480 VAC input voltage.
- Both drivers have a power factor >90%, THD <20%, and an expected life of 100,000 hours.

#### Lifespan

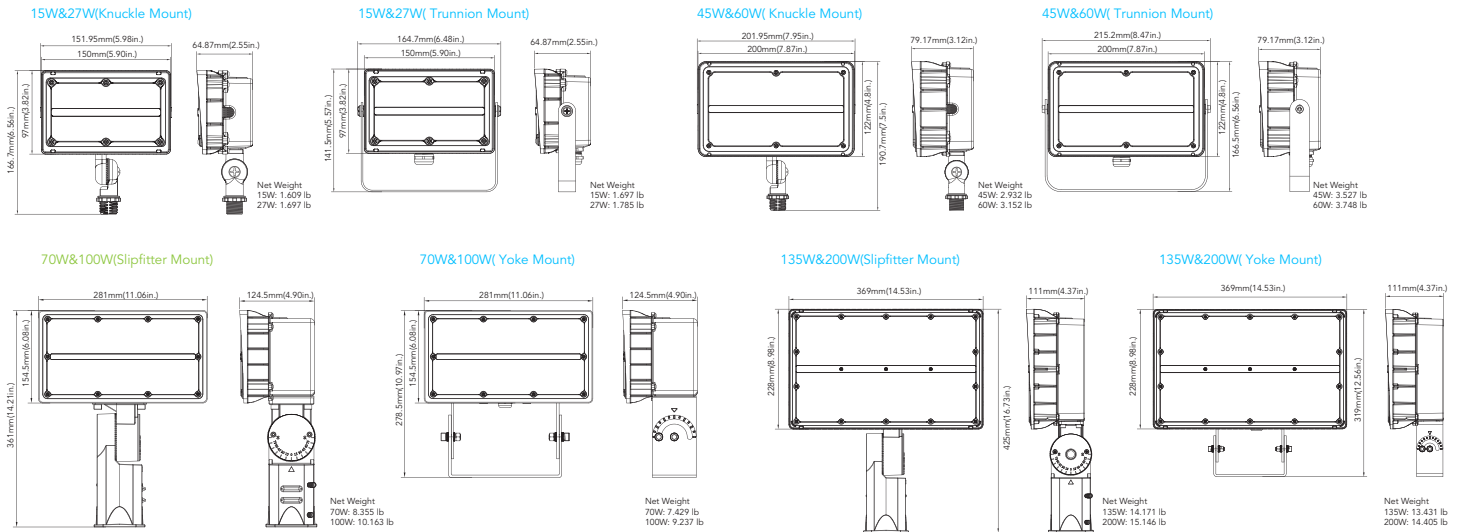
- Estimated 100,000-hour LED lifespan based on IES LM-80 results and TM-21 calculations

#### Warranty

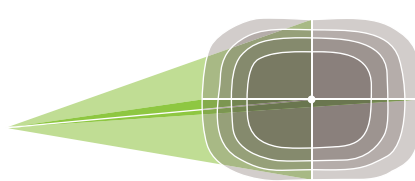
- Five-year warranty.

### DIMENSIONS

unit: mm/inch




#### PHOTOMETRICS



**NEMA beam spread 7Hx6V**

#### ACCESSORIES



**Photocell**  
No. FLF-ACC-PC  
USE: Photocell is field installed or pre-installed in factory by requesting

### PERFORMANCE DATA

SYSTEM WATTS	VOLTAGE	DIST.TYPE	CRI	LUMENS (3000K)	LPW (3000K)	LUMENS (4000K)	LPW (4000K)	LUMENS (5000K)	LPW (5000K)
15W	120-277V	7Hx6V	70	1950lm	130 lm/W	2000lm	133 lm/W	2000lm	133 lm/W
27W	120-277V	7Hx6V	70	3500lm	130 lm/W	3600lm	133 lm/W	3600lm	133 lm/W
45W	120-277V	7Hx6V	70	5550lm	123 lm/W	5650lm	126 lm/W	5650lm	126 lm/W
60W	120-277V	7Hx6V	70	7250lm	121 lm/W	7450lm	124 lm/W	7450lm	124 lm/W
60W	347-480V	7Hx6V	70	7500lm	125 lm/W	7600lm	127 lm/W	7600lm	127 lm/W
70W	120-277V	7Hx6V	70	8700lm	124 lm/W	8900lm	127 lm/W	8900lm	127 lm/W
70W	347-480V	7Hx6V	70	9100lm	130 lm/W	9300lm	133 lm/W	9300lm	133 lm/W
90W	347-480V	7Hx6V	70	12000lm	133 lm/W	12400lm	138 lm/W	12400lm	138 lm/W
100W	120-277V	7Hx6V	70	13100lm	131 lm/W	13300lm	133 lm/W	13300lm	133 lm/W
135W	120-277V/347-480V	7Hx6V	70	17100lm	127 lm/W	17500lm	130 lm/W	17800lm	132 lm/W
200W	120-277V/347-480V	7Hx6V	70	24600lm	123 lm/W	25600lm	128 lm/W	26000lm	130 lm/W

# ELECTRICAL DATA

Number Of Drivers	Driver Current (mA)	Nominal Power (W)	INPUT VOLTAGE (V)	CURRENT (Amps)
1	250	15	120	0.13
		15	208	0.07
		15	240	0.06
		15	277	0.05
1	430	27	120	0.23
		27	208	0.13
		27	240	0.11
		27	277	0.10
1	770	45	120	0.38
		45	208	0.22
		45	240	0.19
		45	277	0.16
1	920	60	120	0.50
		60	208	0.29
		60	240	0.25
		60	277	0.22
1	1600	60	347	0.17
		60	480	0.13
1	1750	70	120	0.58
		70	208	0.34
		70	240	0.29
		70	277	0.25
1	1850	70	347	0.20
		70	480	0.15
1	2600	100	120	0.83
		100	208	0.48
		100	240	0.42
		100	277	0.36
2	2400	90	347	0.26
		90	480	0.19
2	3500	135	120	1.13
		135	208	0.65
		135	240	0.56
		135	277	0.49
		135	347	0.39
		135	480	0.28
2	5000	200	120	1.67
		200	208	0.96
		200	240	0.83
		200	277	0.72
		200	347	0.58
		200	480	0.42

## MOUNTING

1/2" Knuckle Mount (15W/27W/45W/60W)



Trunnion Mount (15W/27W/45W/60W)



Yoke Mount (70W/100W/135W/200W)



Slipfitter Mount (70W/100W/135W/200W)



## ORDERING GUIDE

Fixture Type	Wattage	CCT	Finish	Photocell	Mounting	Voltage
<input type="text"/>	<input type="text"/>	<input type="text"/>	<input type="text"/>	<input type="text"/>	<input type="text"/>	<input type="text"/>
<b>FLF3</b> Flood Light series	<b>15</b> 15W <b>27</b> 27W <b>45</b> 45W <b>60</b> 60W <b>70</b> 70W <b>90</b> 90W <b>100</b> 100W <b>135</b> 135W <b>200</b> 200W	<b>30K</b> 3000K <b>40K</b> 4000K <b>50K</b> 5000K	<b>Blank</b> Dark Bronze <b>B</b> Black <b>W</b> White	<b>Blank</b> Without <b>PC</b> with	<b>TR</b> Trunnion Mount <b>KN</b> Knuckle Mount <b>YK</b> Yoke <b>SP</b> Slipfitter Mount	<b>Blank</b> 120-277V <b>HV</b> 347-480V